

## Pre-build Service

*For efficient network roll-outs and cost control*

### Key benefits:

- Build, patch and configure chassis in a controlled environment
- Bundled and marked equipment provides logistics advantages
- Additional equipment screening eliminates potential errors and delayed deployment process
- Reduced time spent on-site optimizes the roll-out

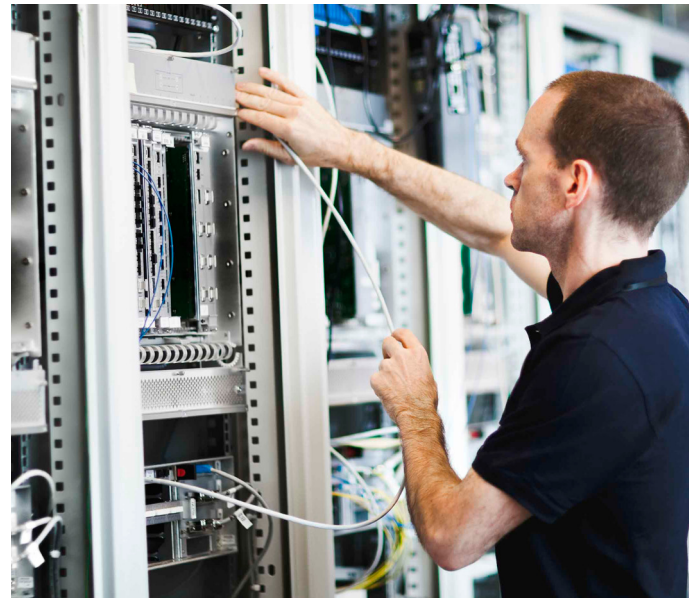
With Transmode Pre-build Service, customers may facilitate their roll-out by pre-building and pre-configuring the equipment before shipping to their premises. This is an excellent complement for customers who prefer to perform their own network roll-out.

### Reduced time on-site

The Pre-build Service will build, patch and configure network nodes in a controlled lab environment. The equipment is packed and clearly marked for each chassis and/or site which will simplify further distribution to the sites upon arrival at the customer's warehouse.

While building the nodes in Transmode's lab, the equipment gets screened again, minimizing dead-on-arrivals (DOA's) and avoiding potential commissioning delays.

The experienced field technicians perform the build and configuration according to the agreed design which ensures the same expertise as received in the field.



Due to pre-building the nodes, the time required on-site is significantly reduced. Experience has shown that on-site time may be reduced up to 50%, compared with installations of equipment that is not pre-built.

### Structured process

A Pre-build Service is delivered using a formal, structured and repeatable process, managed in a project set-up. The project will define scope, time and budget as well as necessary input from the customer in order to complete the service in the best possible way. Examples of input are (but not limited to):

- IP addresses
- Node names
- Topology information
- Circuit numbers/designation
- Requested SW version

### Standard project management tools

The Pre-build Service utilizes a standard set of project management tools and documents based on the PRINCE2 methodology. Early in the process, the customer provides information that is needed to complete the Pre-build in a timely manner.

Each delivery will contain a formal report per chassis describing the build details for easy identification and to simplify the next steps in the roll-out.

### Tailored Service

The extent of the Pre-build Service will be adjusted to meet customer needs. For example, a simple Pre-build will facilitate logistics handling of large quantities of equipment. An advanced pre-build will prepare the equipment set-up to a more detailed level. This can facilitate a roll-out to an almost plug-and-play on-site installation.

The specifications and information within this document are subject to change without further notice. All statements, information and recommendations are believed to be accurate but are presented without warranty of any kind. Contact Transmode for more details.

[www.transmode.com](http://www.transmode.com)